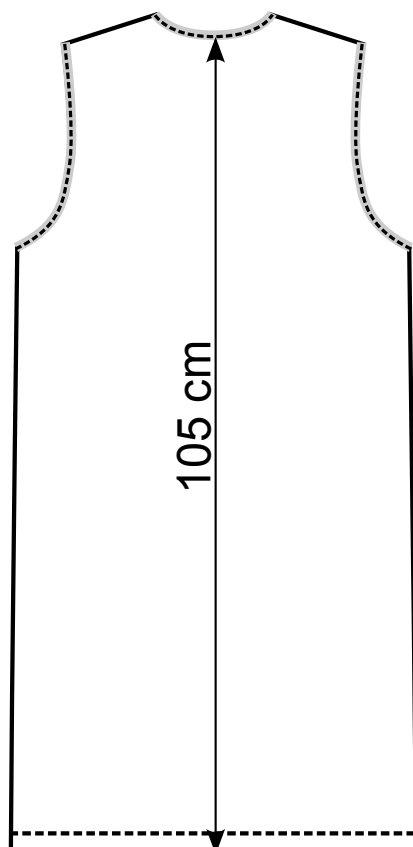
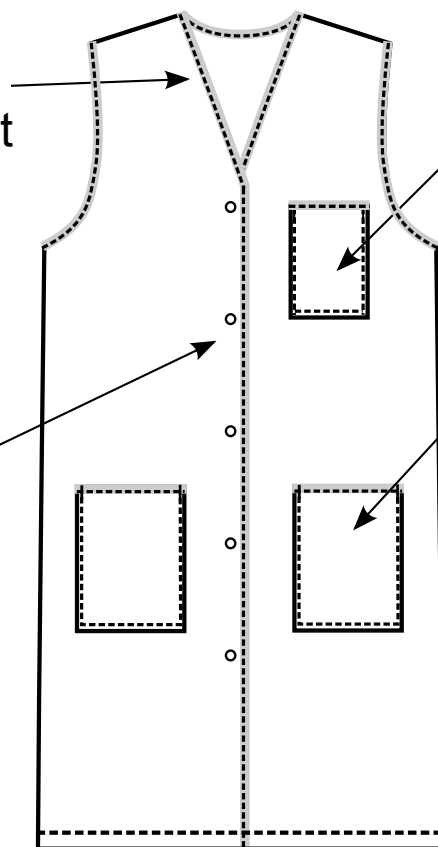


Encolure V  
+ ouverture devant  
+ emmanchure  
gansée de blanc

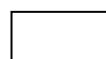
Poche poitrine  
gansée de blanc

Ouverture par  
5 pressions

Poche basse  
gansée de blanc



65% Polyester 35% Coton 195 g/m<sup>2</sup>



Blanc  
Ref. SYLSP00000



Bleu ciel  
Ref. SYLSP00010



Atoll  
Ref. SYLSP00002



Bleu roi  
Ref. SYLSP00021



Gris St Johns  
Ref. SYLSP00058



Marine  
Ref. SYLSP00012